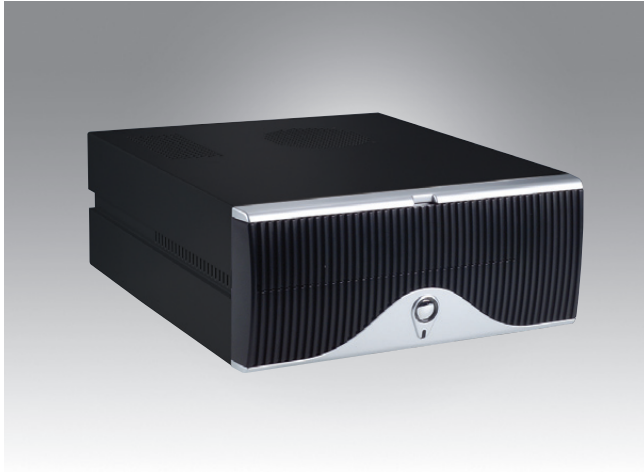


Protogate, Inc.

FW200M-300HD-A Transportable Freeway System

Cost-effective Desktop Chassis MicroATX Motherboard



Features

- Cost-effective desktop chassis MicroATX motherboard
- Supports four expansion slots
- Supports one 5.25" ODD and two 3.5" HDD
- Front-accessible dual USB 2.0
- Equipped with 300 W power supply

Specifications

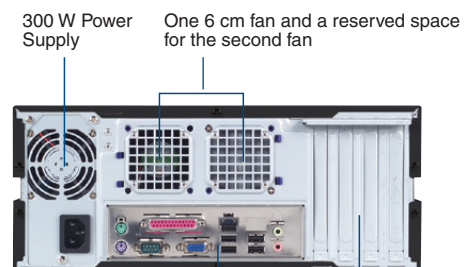
Drive Bay	5.25" Optical Drive	1 (front-accessible)
	3.5"	2 (one front-accessible, one internal)
Cooling	Fan	1 (6 cm / 17 CFM)
I/O Interface	USB	2
Miscellaneous	Expansion Slots	4
	Front Panel Control	Power button
Power Supply	Power Output Wattage	300 W
	Input Range	AC 100 ~ 127 V / 200 ~ 240 V (selectable)
	Output Voltage	+12 V @ 14.5 A, +5 V @ 18 A, +5 Vsb @ 2 A, +3.3 V @ 18 A, -12 V @ 0.4 A
Physical Characteristics	Dimensions (W x H x D)	326 x 134 x 348 mm (12.8" x 5.3" x 13.7")
	Weight	4.6 kg (10.1 lb)

Front View



Power button with LED

Rear View



300 W Power Supply

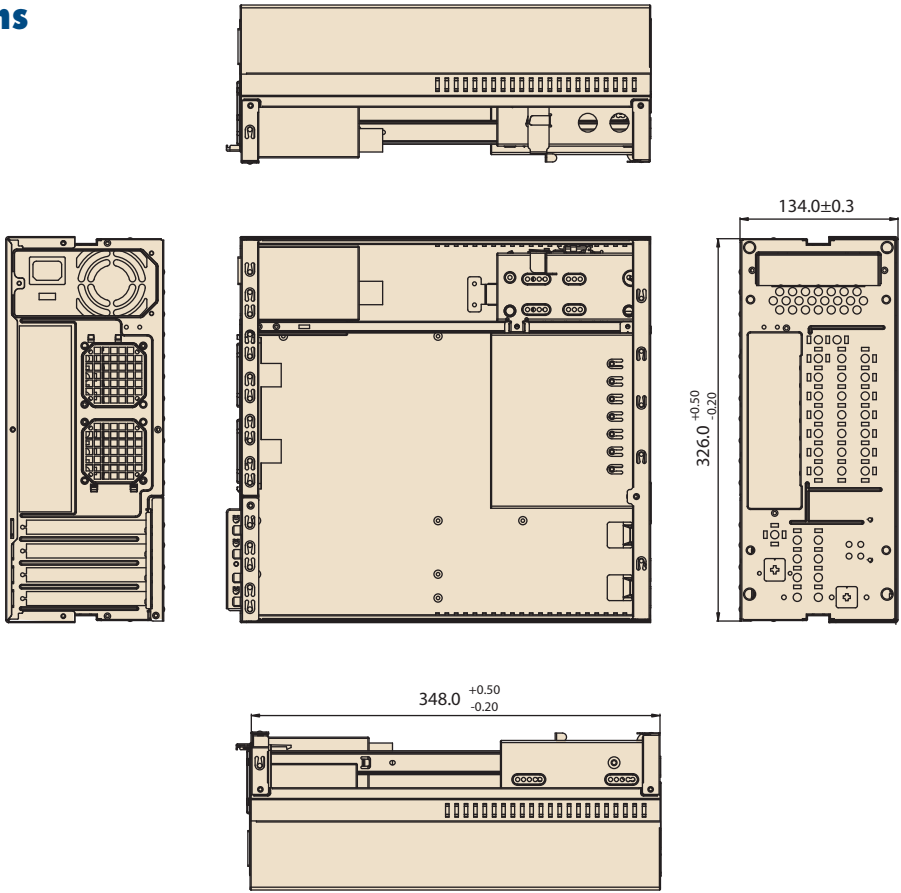
One 6 cm fan and a reserved space for the second fan

Supports standard MicroATX rear I/O shield

4 expansion slots

Dimensions

Unit: mm



Ordering Information

Part Number	Description
FW200M-300HD-A	Transportable Freeway System , MicroATX chassis with 300W power supply